

YEAR 2012

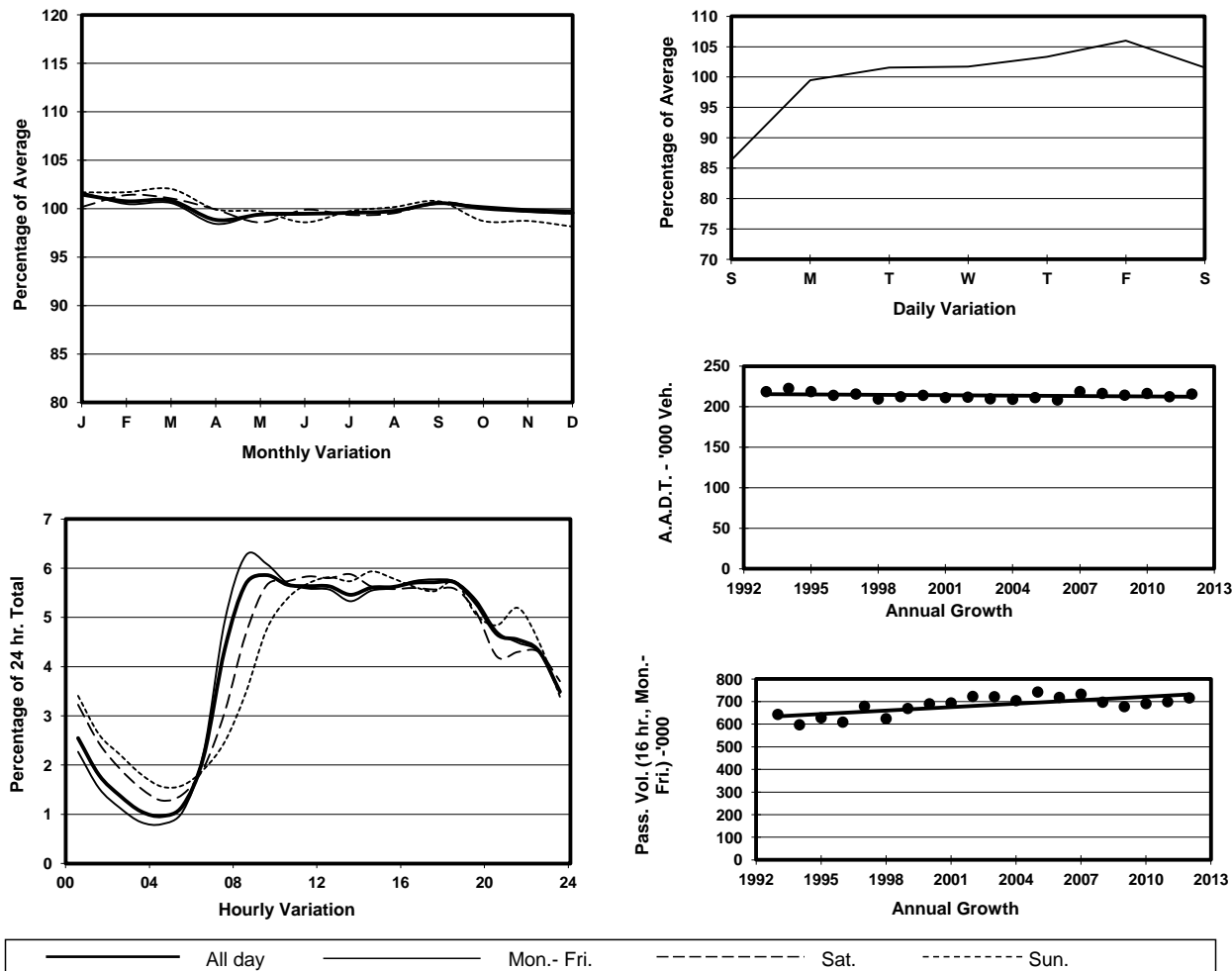
Location

Screenline G-G(East end of Causeway Bay)

Stations on Cordon/Screenline

1002, 1107, 2204 and 2214

1. TRAFFIC FLOW VARIATION AND GROWTH



2. TRAFFIC CHARACTERISTICS (BY DIRECTION)

Parameter	All - Day	Mon. - Fri.	Sat.	Sun.
EAST BOUND				
A.A.D.T.	105810	108740	107910	94520
R 12 / 24 - %	64.8	66.1	62.4	59.9
R 16 / 24 - %	85	86.4	81.3	80.7
AM Peak Hour	0900-1000	0800-0900	0900-1000	0900-1000
One-way flow at AM peak hour	5740	6340	5370	4240
T - % (AM)	-	11	-	-
PM Peak Hour	1600-1700	1600-1700	1600-1700	1600-1700
One-way flow at PM peak hour	6290	6520	6310	5410
T - % (PM)	-	10.7	-	-
Prop.of commercial vehicles - 16 hr.	-	10.4	-	-
WEST BOUND				
A.A.D.T.	109770	113720	112590	92850
R 12 / 24 - %	68.4	69.4	66.8	64
R 16 / 24 - %	85.9	86.9	83.7	82.3
AM Peak Hour	0900-1000	0800-0900	0900-1000	0900-1000
One-way flow at AM peak hour	6890	7580	7100	4660
T - % (AM)	-	11.6	-	-
PM Peak Hour	1700-1800	1700-1800	1800-1900	1800-1900
One-way flow at PM peak hour	6260	6560	6190	5410
T - % (PM)	-	10.8	-	-
Prop.of commercial vehicles - 16 hr.	-	10.3	-	-

3. OTHER INFORMATION AND COMMENT

4. Vehicle classification and occupancy - Monday to Friday

Time		Class of vehicle									
		Motor Cycle	Private Car	Taxi	Private LB	PLB	Goods veh.		Non Fr. Bus	Fr. Bus	
							Light	M & H		SD	DD
0700-0800	Pro	3.5	26.5	32.9	3.4	1.8	12.9	3.1	8.2	0.6	7.1
	Ocp	1.0	1.4	1.9	6.8	11.4	1.5	1.4	16.0	21.8	43.2
0800-0900 Peak Hour	Pro	3.6	44.8	27.9	1.5	1.1	9.9	2.0	3.5	0.3	5.5
	Ocp	1.1	1.4	1.9	7.9	14.1	1.8	1.4	14.1	21.9	54.5
0900-1000	Pro	2.0	38.4	31.9	1.0	1.1	15.0	2.9	2.1	0.2	5.3
	Ocp	1.1	1.6	2.0	3.3	9.9	1.6	1.3	8.7	18.3	27.2
1000-1100	Pro	2.5	32.2	33.9	0.8	1.1	18.9	3.3	1.9	0.3	5.1
	Ocp	1.1	1.5	1.9	2.2	6.7	1.6	1.5	7.3	14.5	21.3
1100-1200	Pro	2.3	35.4	30.9	1.3	0.8	20.3	2.4	1.6	0.3	4.7
	Ocp	1.0	1.5	1.9	2.4	7.0	1.6	1.6	6.0	12.4	23.8
1200-1300	Pro	2.3	39.5	30.6	1.1	1.0	16.0	2.3	2.7	0.2	4.2
	Ocp	1.0	1.6	1.9	6.8	6.7	1.6	1.4	14.2	15.5	22.9
1300-1400	Pro	2.6	34.7	31.2	1.2	1.0	18.0	4.2	2.0	0.3	4.8
	Ocp	1.0	1.5	1.9	3.6	6.7	1.7	1.5	9.1	16.1	24.6
1400-1500	Pro	1.9	37.6	29.4	1.1	0.8	19.2	3.2	1.9	0.2	4.7
	Ocp	1.0	1.5	2.1	2.3	8.4	1.6	1.4	6.0	11.6	23.3
1500-1600	Pro	2.5	39.3	28.0	1.8	0.7	17.5	2.7	2.3	0.3	4.8
	Ocp	1.1	1.4	2.0	5.6	4.6	1.6	1.4	15.3	15.8	24.0
1600-1700	Pro	2.2	39.4	29.8	1.8	0.8	14.7	2.1	3.7	0.3	5.2
	Ocp	1.1	1.5	1.7	3.5	9.8	1.6	1.3	8.9	16.3	26.6
1700-1800	Pro	4.3	40.2	28.6	1.7	1.0	13.3	1.7	2.9	0.3	6.0
	Ocp	1.1	1.4	2.0	3.1	11.2	1.6	1.5	11.6	19.2	33.7
1800-1900	Pro	4.9	50.0	27.4	0.5	1.7	6.6	0.4	2.2	0.3	6.0
	Ocp	1.1	1.5	2.2	5.6	14.3	1.6	1.3	10.5	19.4	48.7
1900-2000	Pro	2.7	51.6	30.3	0.5	1.3	4.9	0.6	1.8	0.3	5.9
	Ocp	1.2	1.5	2.2	2.0	12.7	1.5	1.3	4.9	17.9	37.3
2000-2100	Pro	2.1	40.8	42.8	0.3	1.4	4.6	0.8	1.2	0.3	5.7
	Ocp	1.1	1.6	2.0	1.9	10.2	1.5	1.6	10.1	7.1	27.5
2100-2200	Pro	2.7	38.3	45.1	0.3	1.9	3.4	0.7	1.1	0.3	6.2
	Ocp	1.1	1.6	2.1	1.4	8.3	1.6	1.2	2.6	7.1	27.6
2200-2300	Pro	2.8	39.0	47.2	0.1	1.6	2.1	0.4	0.7	0.3	5.8
	Ocp	1.1	1.6	1.9	1.3	8.3	1.6	1.3	5.2	5.6	29.1
16 hours	Pro	2.8	39.4	32.5	1.2	1.2	12.7	2.1	2.5	0.3	5.4
	Ocp	1.1	1.5	2.0	4.5	9.9	1.6	1.4	11.1	15.6	31.9

Legend

- Pro.** Proportion of vehicles in % (Sum may not add up to 100% due to figure rounding)
- Ocp.** Average occupancy of vehicles
- M & H** Medium and Heavy